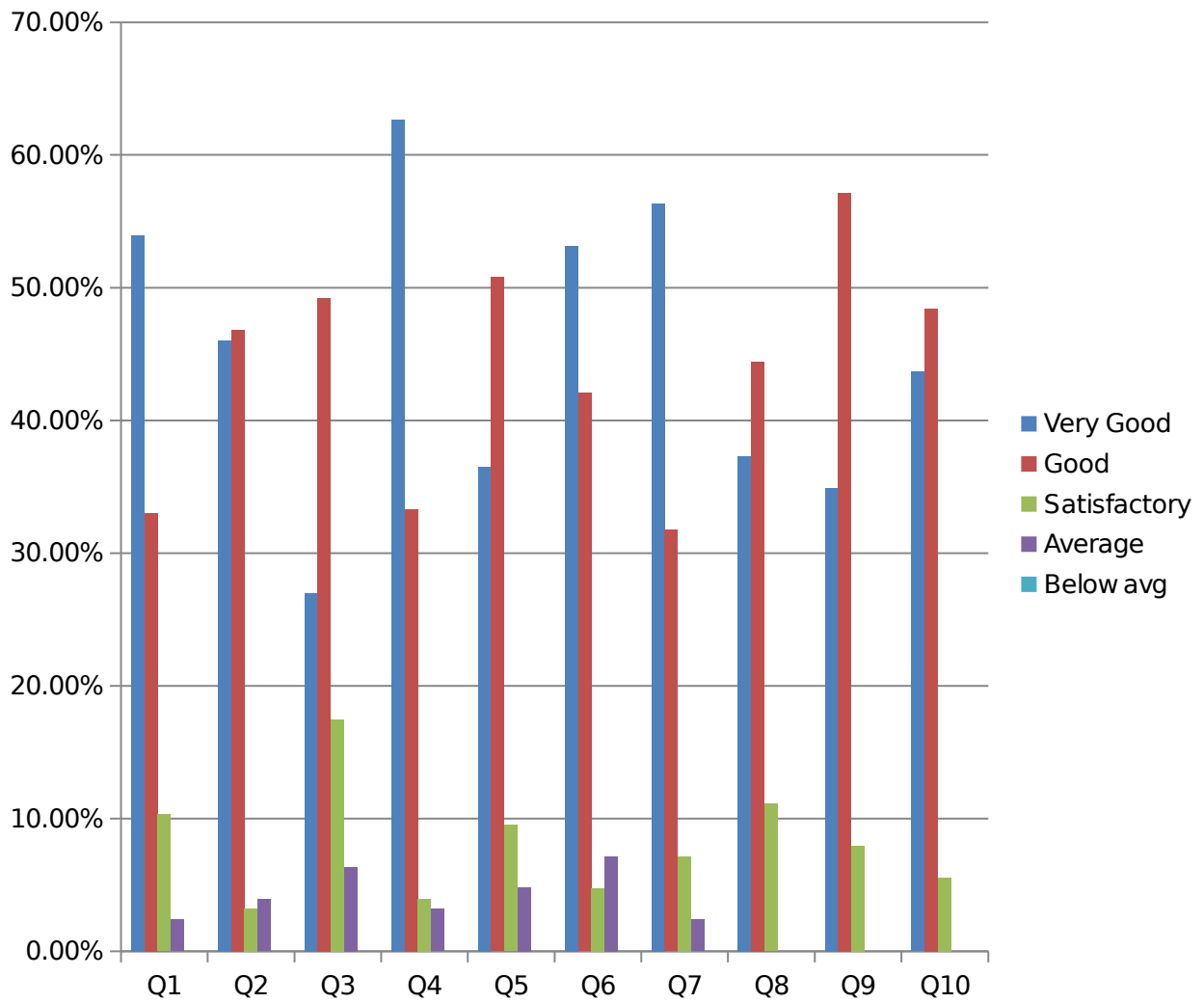


ALUMNI FEEDBACK ANALYSIS FOR THE YEAR 2018-19

Our alumni are a source of our pride. Alumni involvement requires that students act as collaborators in, rather than merely passive receivers of teaching and learning. The purpose of this feedback is to obtain the inputs from the alumni on various parameters. This feedback is collected from all participating alumni of the college during Annual Alumni meet or through e-mail. The format for feedback is shared by IQAC committee to the Alumni Incharges for collection of feedback either manually or electronically. The collected feedback is then submitted to the IQAC committee for analysis and necessary action at their end.

ALUMNI FEEDBACK ANALYSIS						
S.No.	PARAMETERS	Very Good	Good	Satisfactory	Average	Below Avg.
1	Rating Amongst Top colleges	53.96%	33%	10.31%	2.38%	-
2	Infrastructure for academic and extra curricular activities	46.03%	46.82%	3.23%	3.92%	-
3	Recreational facilities	26.98%	49.20%	17.46%	6.34%	-
4	Friendly nature of teachers	62.69%	33.33%	3.96%		-
5	Interaction with administrative staff	36.50%	50.79%	9.51%	3.20%	-
6	Emphasis on covering syllabus	53.17%	42.06%	4.76%		-
7	Placement cell of college	56.34%	31.74%	7.12%	4.80%	-
8	Recommendations to your near and dear ones	37.30%	44.44%	11.11%	7.14%	-
9	Extra coaching to shape your career	34.92%	57.14%	7.93%		-
10	Extra activities for overall personality development	43.65%	48.41%	5.55%	2.38%	-


PRINCIPAL
PT. MOHAN LAL S.D. COLLEGE FOR WOMEN
GURDASPUR



Alumni Feedback Analysis 2018-19

