


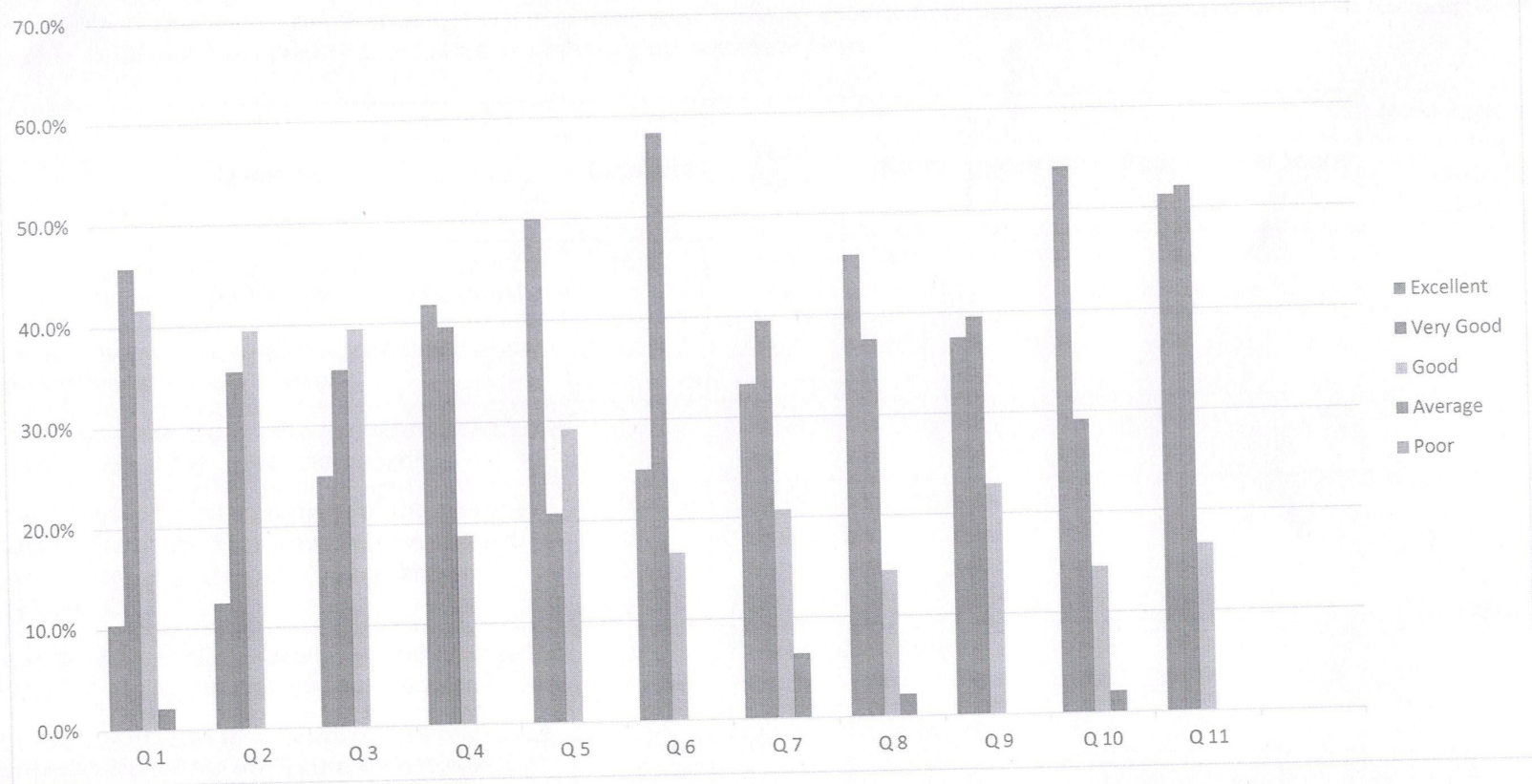
FACULTY FEEDBACK ANALYSIS FOR THE YEAR 2019-20

Faculty plays a very important role in the development and enhancement of the quality of the learning experience. The purpose of this feedback is to obtain the teacher's input on curriculum design and revision, employability, examination pattern and reforms and overall teaching learning environment. The feedback from faculty is collected once during an academic year.

Sr. No	Question	Excellent	Very Good	Good	Average	Poor	Total Score	If Average or poor the changes suggested
1	How do you rate the Programme offered in terms of the load of the courses in different semesters?	10.41	45.8	41.7	2.09			
2	How do you rate the availability of the text and reference books in the market?	12.5	39.7	33.3	14.5			
3	How do you rate the quality and relevance of the courses included into the curriculum?	25.01	35.49	39.5				
4	How do you rate the treatment of the students irrespective of the background of the student (caste, community, creed etc.) in teaching and evaluation?	41.74	39.51	18.75				
5	How do you rate the ambience of the College for effective delivery of the academic process?	50	20.81	29.19				
6	How do rate the courses in terms of their relevance to the latest and/or the future technologies?	25.03	58.29	16.68				
7	How do you rate the programmes based on the comfort of your ward in coping with the workload?	33.3	39.5	20.8	6.40			
8	How do you rate the outcomes that your student has achieved from the courses?	45.83	37.5	14.5	2.17			
9	How do you rate the transparency of the evaluation system in the College?	37.52	39.5	22.98				
10	How do you rate the college activities that help your students in getting jobs and placements?	54.16	29.16	14.6	2.08			
11	How do you rate the transformation of your students after the completion of the course?	51.25	52.08	16.67				


 Principal
 Pt. Mohan Lal S.D. College for Women
 Gurdaspur

Faculty Feedback Analysis 2019-20



[Handwritten Signature]
 Principal
 Pt. Mohan Lal S.D. College for Women
 Gurdaspur

Pt. Mohan Lal SD College for Women, Gurdaspur
INTERNAL QUALITY ASSURANCE CELL (IQAC)
FACULTY FEEDBACK FORM

Sr. No	Question	Excellent	Very Good	Good	Average	Poor	Total Score	If Average or poor the changes suggested
1	How do you rate the programme offered in terms of the load of the courses in different semesters?							
2	How do you rate the availability of the text and reference books in the market?							
3	How do you rate the quality and relevance of the courses included into the curriculum?							
4	How do you rate the treatment of the students irrespective of the background of the student (caste, community, creed etc.) in teaching and evaluation?							
5	How do you rate the ambience of the College for effective delivery of the academic process?							
6	How do rate the courses in terms of their relevance to the latest and/or the future technologies?							
7	How do you rate the programmes based on the comfort of your ward in coping with the workload?							
8	How do you rate the outcomes that your student has achieved from the courses?							
9	How do you rate the transparency of the evaluation system in the College?							
10	How do you rate the college activities that help your students in getting jobs and placements?							
11	How do you rate the transformation of your students after the completion of the course?							

(Signature)
Principal
Pt Mohan Lal S.D. College
for Women, Gurdaspur